

The National Orthotics and Prosthetics Assembly: Official Notice

Since many readers of the Orthopedic and Prosthetic Appliance Journal are physicians, surgeons, or rehabilitation officials who are not members of the American Orthotics and Prosthetics Association, the following information is given to acquaint them with the purposes and program of the Association's annual Assembly.

The 1966 National Orthotics and Prosthetics Assembly will be held at Palm Springs, California, at the Riviera Holiday Inn, October 16 to 20. The first session will be followed by a reconvened session in Hawaii, which is to feature technical programs with the cooperation of Dr. Ivar J. Larsen of Honolulu and other physicians and rehabilitation officials of the state of Hawaii.

The Assembly is much more than the annual convention of the American Orthotics and Prosthetics Association. It is a technical and professional session of all persons concerned with rehabilitation of the orthopedically handicapped and includes program features of general interest to the medical profession and to rehabilitation officials as well as to Association members. Each session of the Assembly finds a larger registration of medical and paramedical officials attending.

Several related educational and research groups will hold their meetings in conjunction with the Assembly, including the University Council on Prosthetic-Orthotic Education (UCOPE).

Child Amputee Prosthetics Project, UCLA, and Rancho Los Amigos—One of the events planned for those arriving early at the Assembly is a tour on Friday, October 14, of the Rehabilitation Center and the Child Amputee Prosthetics Project at UCLA, with inspection of the Prosthetic-Orthotic classrooms there. Following luncheon, the tour members will visit the orthotic facilities at the Rancho Los Amigos Hospital in Downey.

Technical Exhibits—Displays and exhibits of the latest devices and orthotic-prosthetic supplies will be open to those registered at the Assembly from 10 a.m. to 5 p.m. on Sunday, October 16, and from 9 a.m. to 5 p.m. throughout the Assembly. These exhibits include displays from Universities which offer courses in orthotics and prosthetics, and from Government agencies concerned with rehabilitation, as well as from suppliers in the field. Information on the availability of exhibit space may be obtained from the Exhibits Chairmen, Kenneth Dodd and Cletus Iler, American Orthotics and Prosthetics Association, 919 18th St., N.W., Washington, D.C. 20006.

Program Highlights

Program Chairman Leroy Noble of Whittier, California, has reported some of the major presentations to be given at the 1966 Assembly, and a brief resume of these sessions follows:

Milwaukee Brace Session—A round table discussion led by persons who have taken the course offered at Milwaukee.

Higher Education for the Orthotic-Prosthetic Field—A panel discussion of the courses available at Chicago City Junior College, Northwestern University, University of California, Los Angeles, and Cerritos College.

Medicare—Question and answer session on State Medicare agencies, schedules, and the Association's Inter-Agency Committee.

New Techniques and Devices—Demonstration of new ideas and developments.

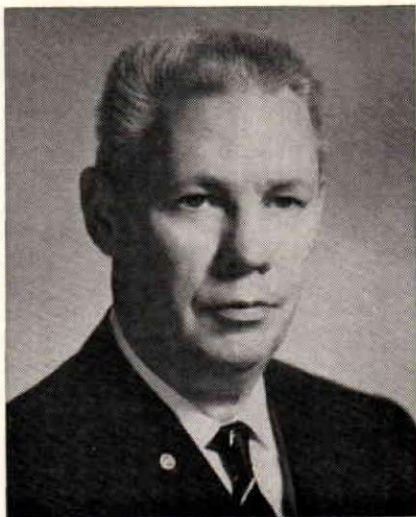
Fracture Splinting and Bracing.

End-Bearing Characteristics of Lower Extremity Amputation Stumps.

Immediate Post-Operative Prosthetics.

Cerebral Palsy: The California Approach.

Upper Extremity Prosthetics: Current Status and Developments.



LEROY NOBLE, C.O.

Assembly Exhibitors Announced

Applications for exhibit space have been received by the Association's Exhibits Committee from the following firms:

Americana Corporation (Encyclopedia Americana)
Apex Foot Health Products Co.
Atco Surgical Supports, Inc.
Otto Bock Orthopedic Industry, Inc.
Encyclopaedia Britannica, Inc.
S. H. Camp & Company
D. W. Dorrance Co., Inc.
Dupaco, Inc.
Everest & Jennings, Inc.
Florida Brace Company
Florida Manufacturing Corporation
Freeman Manufacturing Company
A. J. Hosmer Corp.

Herbst Shoe Manufacturing Company
Hersco Arch Products Corp.
Kellogg Corset Company and
 Wilh. Jul. Teufel
Kingsley Mfg. Co.
The Knit-Rite Company
Ohio Willow Wood Co.
Pacific Hide & Leather Company
Pope Brace Company
Prosthetic Services of San Francisco
I. Sabel Shoes
Spencer Medical
Truform Anatomical Supports
United States Manufacturing Co.