

The Caldwell Os Calcis Brace

By Ray E. King, M.D.

Fractures of the os calcis frequently require prolonged periods of non-weight bearing until sufficient callus has formed to prevent further crushing or deformity of the fractured bone. A brace was recently developed by the late Dr. Gene Caldwell, with the cooperation of Snells Limb and Brace Co. of Shreveport, La., which permits early ambulation following os calcis fractures. (Fig. 1 and 2) This brace consists of a moulded leather calf lacer attached to double upright supports, an adjustable walking bar and a shoe with the heel and counter removed.

In designing this brace it was necessary to have a moulded calf lacer instead of bands about the upper and lower calf to place the posterior calf muscles at rest and reduce tension on the achilles tendon. The foot is also placed in a moderate equinus position, which further reduces pull on the posterior aspect of the os calcis. A comfortable position can be secured by the adjustable walking bar. In making this brace, it is essential that weight bearing fall anterior to the calcaneo-cuboid joint so that no weight bearing is borne on the os calcis. The double uprights and walking bar are placed at the level of the cuboid and on weight bearing no strain is placed on the os calcis.

Approximately 100 of these os calcis braces have been used during the past 5 years. Following reduction of the fracture and as soon as soft tissue reaction has subsided, weight bearing is permitted. The fractured os calcis is protected until healing is complete, when the brace is discarded and weight bearing in a shoe is permitted. This brace has been especially ad-

(Continued, bottom page 63)

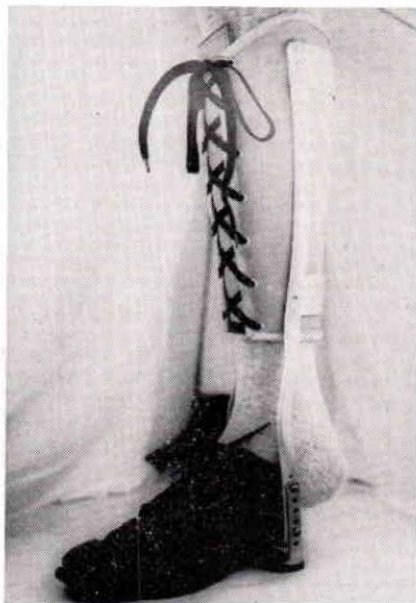


Fig. 1

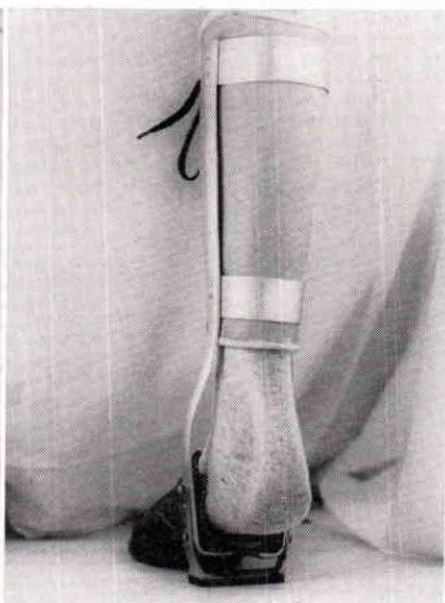
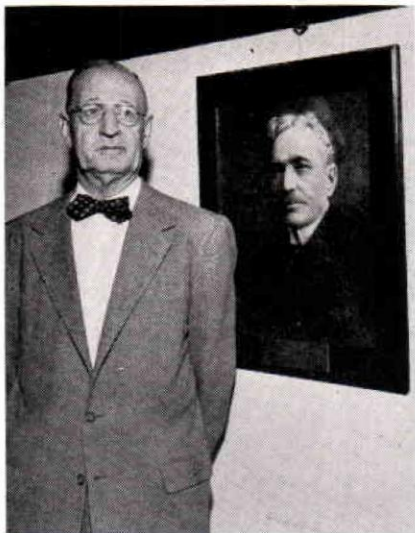


Fig. 2

BLAINE KORRADY RETIRES— ENDS OUTSTANDING CAREER

As the Journal goes to press, word comes of the purchase of the J. F. Rowley Company, Certified Facility at Chicago, Illinois, by Mr. Walter Schoene, head of the Bardach-Schoene Company. The Rowley facility had been managed for many years by Mr. J. Blaine Korrady, one of America's pioneer prosthetists and a founding-member of the American Board for Certification. Mr. Korrady is shown in the picture with a photograph of Mr. J. F. Rowley. An article by Jack Heltsley about this significant change will appear in the December Journal.

The Rowley Company will continue under operation at the same location and under the same name.



SUPPLY DISPLAYS AT THE NATIONAL ASSEMBLY

(Note: Description of other Exhibits will be found on pages 105-108.)

BENNINGTON STUMP SOCK CORPORATION—BOOTH NO. 10

Will display their world known Bessco Amputee Stump Socks. Featured will be a new Shrink resistant Amputee Stump Sock. A display of our new nylon stockinette will also be shown.

K & KPROSTHETIC SUPPLIES, INC.—BOOTH NO. 11

Will feature a full line of knee assemblies, foot assemblies and other component parts for the Prosthetic Profession, among the many products shown will be those of the most famous manufacturers in Europe—as Otto Bock, Kraemer, Hucklenbroick, Lang.

We are featuring the only factory-made children's knee assembly.

CALDWELL OS CALCIS BRACE

(Continued from page 62)

vantageous in cases of bilateral fracture of the os calcis permitting full weight bearing approximately 2 weeks after reduction of the fractures. The brace is comfortable to wear if made properly and early ambulation has been found to be a definite advantage, reducing the convalescence period following fractures of the os calcis and allowing the patient to resume his regular occupation at an earlier date.